

维拓斯液压

### CV型螺纹插入式单向阀

VTOZ®

通径(NG)4至20

压力至350bar

流量至300L/min

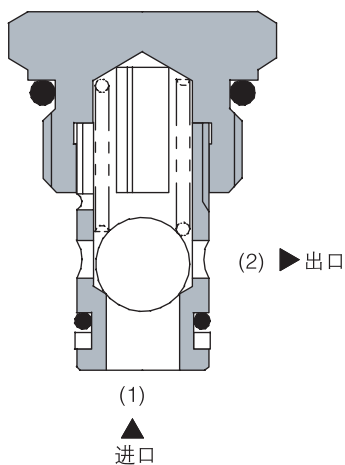
- 螺纹插入式安装方式
- 压力损失小
- 结构紧凑
- 工作寿命长、低泄漏
- 可选择不同的开启压力



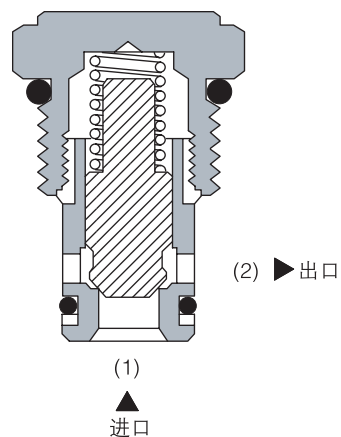
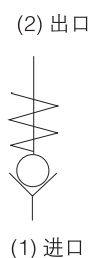
### 说明

CV型单向阀的作用是：油液只能从1口进入，从2口流出，单向阀开启。而油液从2口流入时，单向阀关闭。

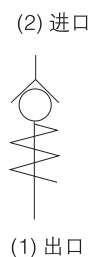
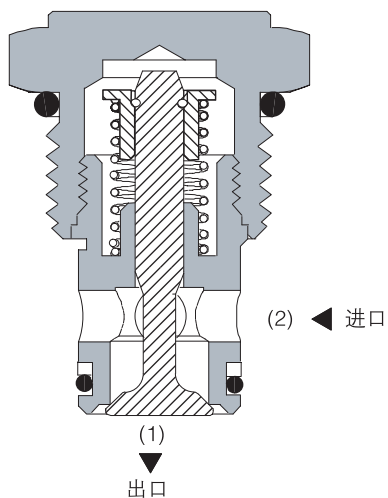
钢球型



锥阀型

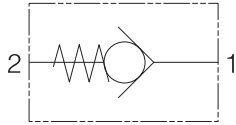


CVR型反向型单向阀的作用是：油液只能从2口进入，从1口流出，单向阀开启。而油液从1口流入时，单向阀关闭。



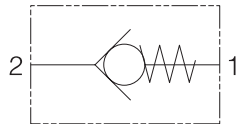
## 选型索引

功能符号



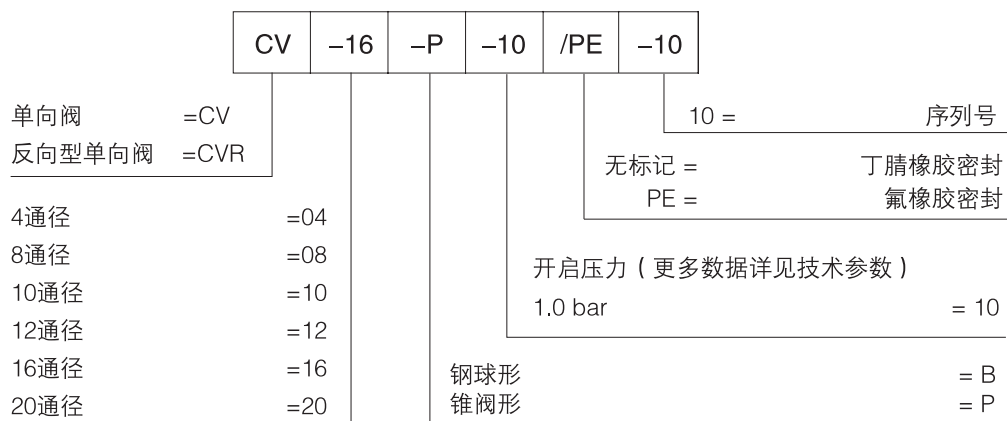
型号	腔孔	额定流量	典型压力	页码
单向阀, 直动		L/min (USgpm)	bar (psi)	
CV-04-B	C-4-2	5.7 (1.5)	250 (3000)	83
CV-08-B	C-8-2	18.9 (5)	250 (3000)	84
CV-08-P	C-8-2	20 (5.28)	250 (3000)	85
CV-10-B	C-10-2	75.8 (20)	250 (3000)	86
CV-10-P	C-10-2	37.9 (10)	350 (5000)	87
CV-12-P	C-12-2	120 (31.7)	250 (3000)	88
CV-16-P	C-16-2	227 (60)	350 (5000)	89
CV-20-P	C-20-2	265 (70)	350 (5000)	90

功能符号

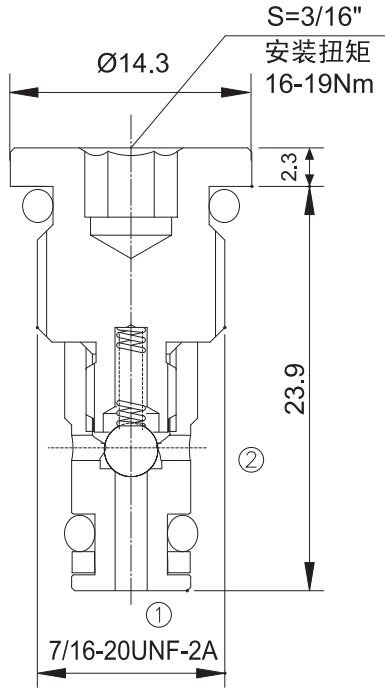


型号	腔孔	额定流量	典型压力	页码
单向阀, 直动		L/min (USgpm)	bar (psi)	
CVR-08-P	C-8-2	25 (6.6)	350 (5000)	91
CVR-10-P	C-10-2	60.6 (16)	350 (5000)	92

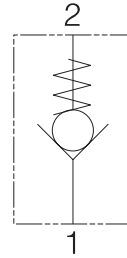
## 订货型号



# CV-04-B 外形与技术参数



功能符号

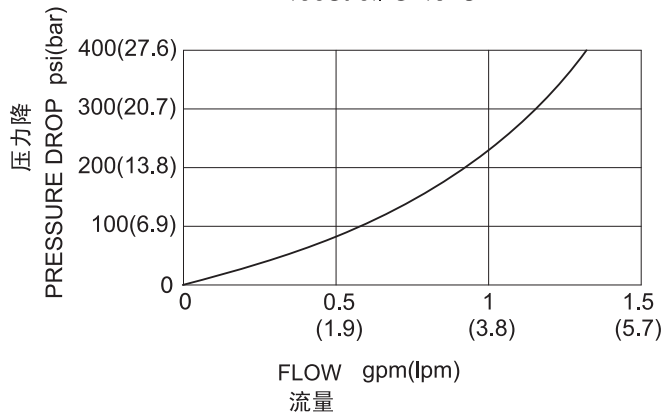


## 技术参数 SPECIFICATIONS

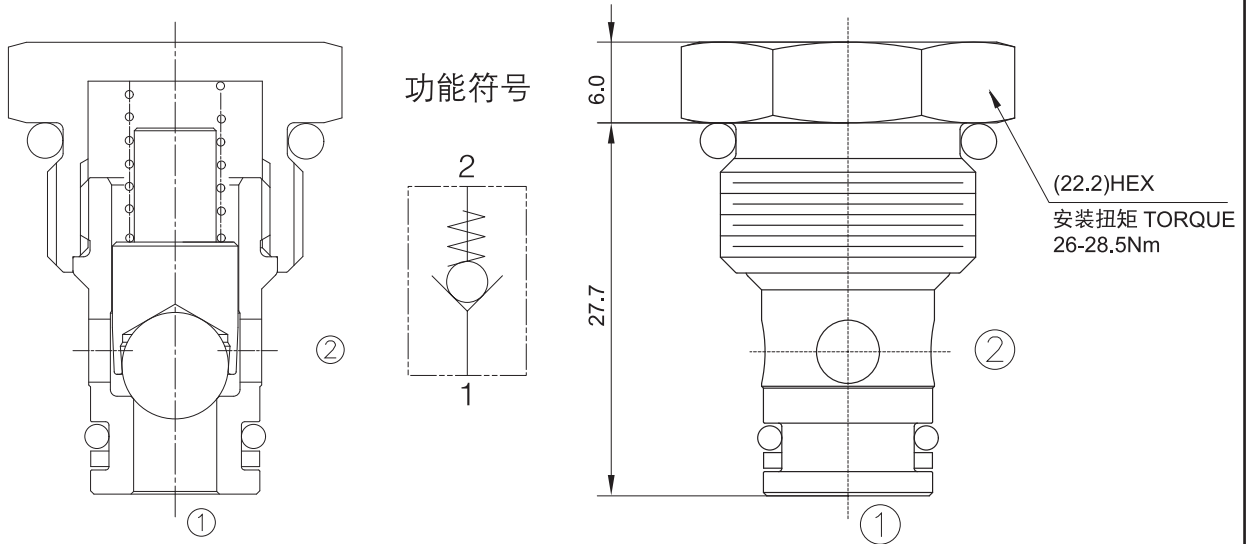
工作压力(Operating Pressure):	250bar
流量(Flow):	See PRESSURE DROP VS.FLOW graph.
内泄漏(Internal Leakage):	2 drops/min(滴/分). max. at 250bar
开启压力(Crack Pressures):	0.3=0.3bar
温度(Temperature):	-40°F to +250°F(-40°C to +120°C)
油液(Fluids):	Mineral-based fluids with viscosities of 7.4 to 420 cSt.(矿物油粘度)
插孔(Cavity):	C-4-2, See page 93
过滤(Filtration):	25µm or better

## 压力 - 流量曲线 PRESSURE DROP VS.FLOW

① to ② (with 0.3 bar/4 psi spring)  
46cSt oil @ 40°C



## CV-08-B 外形与技术参数

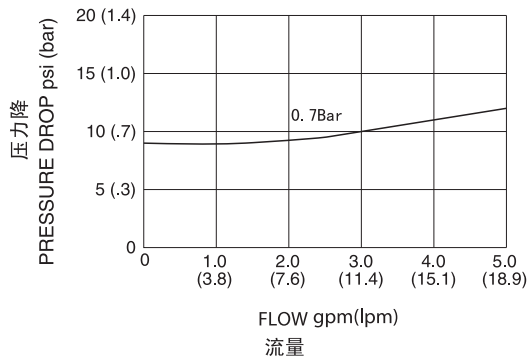


### 技术参数 SPECIFICATIONS

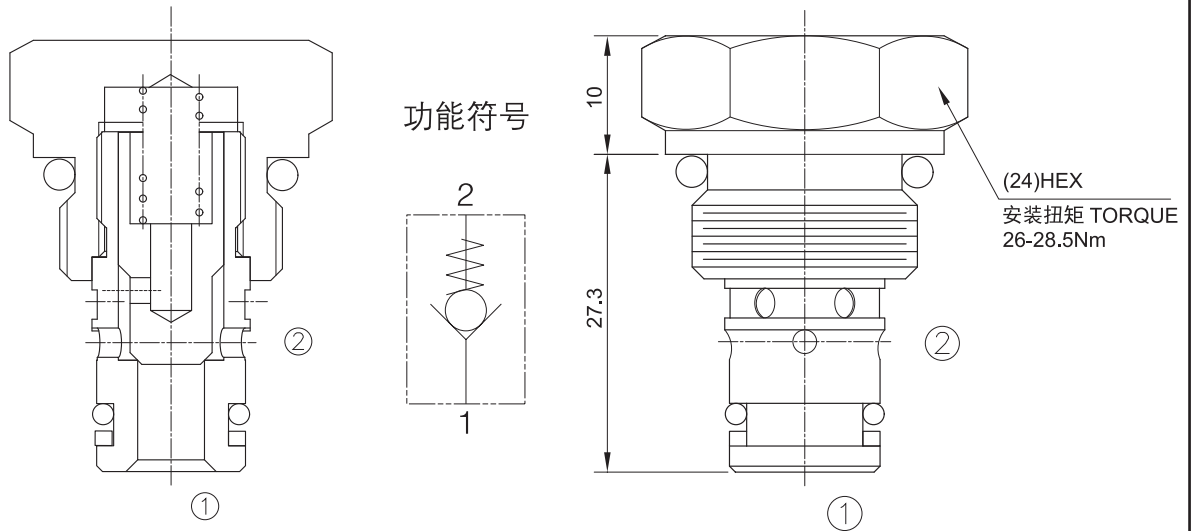
工作压力(Operating Pressure):	250bar
流量(Flow):	See PRESSURE DROP VS.FLOW graph.
内泄漏(Internal Leakage):	2 drops/min(滴/分). max. at 250bar
开启压力(Crack Pressures):	03 =0.3bar 07=0.7bar 21=2.1bar 69=6.9bar
温度(Temperature):	-40°F to +250°F(-40°C to +120°C)
过滤(Filtration):	25µm or better
油液(Fluids):	Mineral-based fluids with viscosities of 7.4 to 420 cSt.(矿物油粘度)
插孔(Cavity):	C-8-2, See page 93

### 压力 - 流量曲线 PRESSURE DROP VS.FLOW

① to ② (with 0.3 bar/4 psi spring)  
46cSt oil @ 40°C



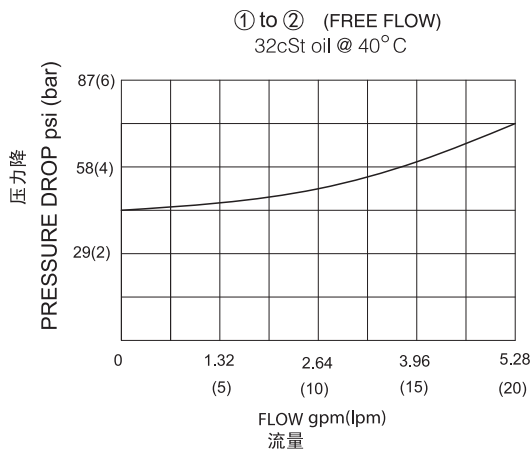
# CV-08-P 外形与技术参数



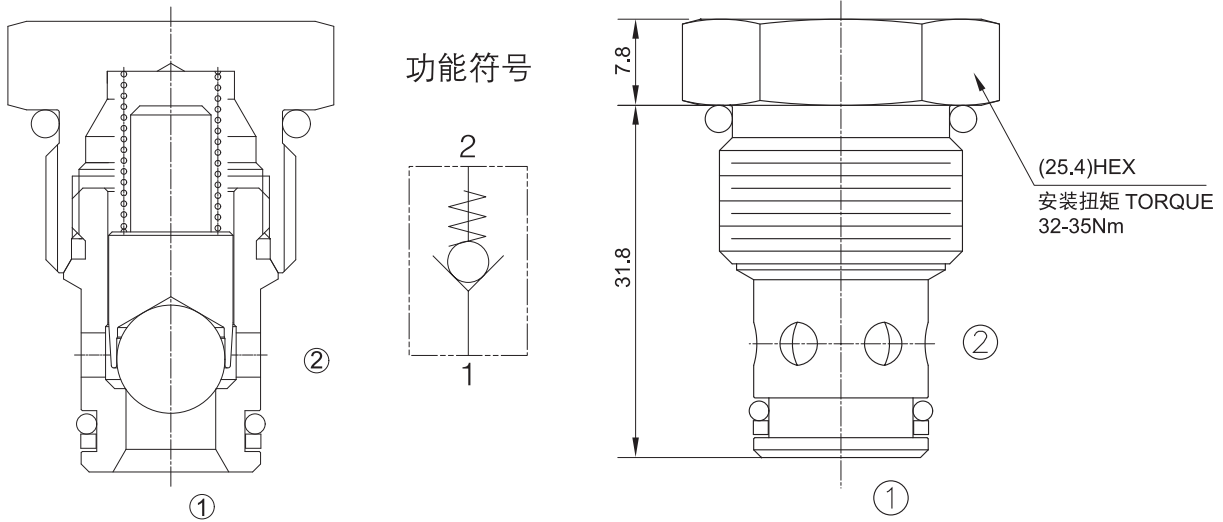
## 技术参数 SPECIFICATIONS

工作压力(Operating Pressure):	250bar
流量(Flow):	See PRESSURE DROP VS.FLOW graph.
内泄漏(Internal Leakage):	2 drops/min(滴/分). max. at 250bar
开启压力(Crack Pressures):	03=0.3bar 07=0.7bar 21=2.1bar 30=3.0bar 41=4.1bar 69=6.9bar
温度(Temperature):	-40°F to +250°F(-40°C to +120°C)
过滤(Filtration):	25µm or better
油液(Fluids):	Mineral-based fluids with viscosities of 7.4 to 420 cSt.(矿物油粘度)
插孔(Cavity):	C-8-2, See page 93

## 压力 - 流量曲线 PRESSURE DROP VS.FLOW



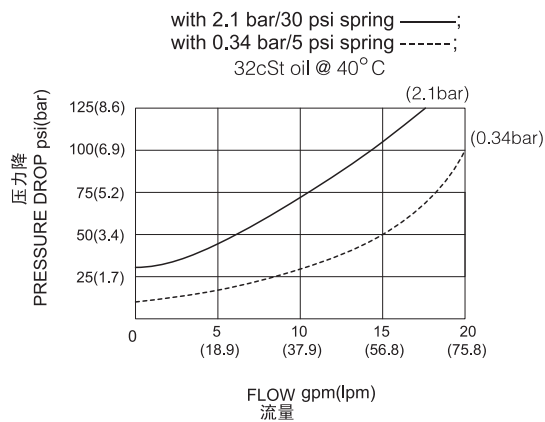
# CV-10-B 外形与技术参数



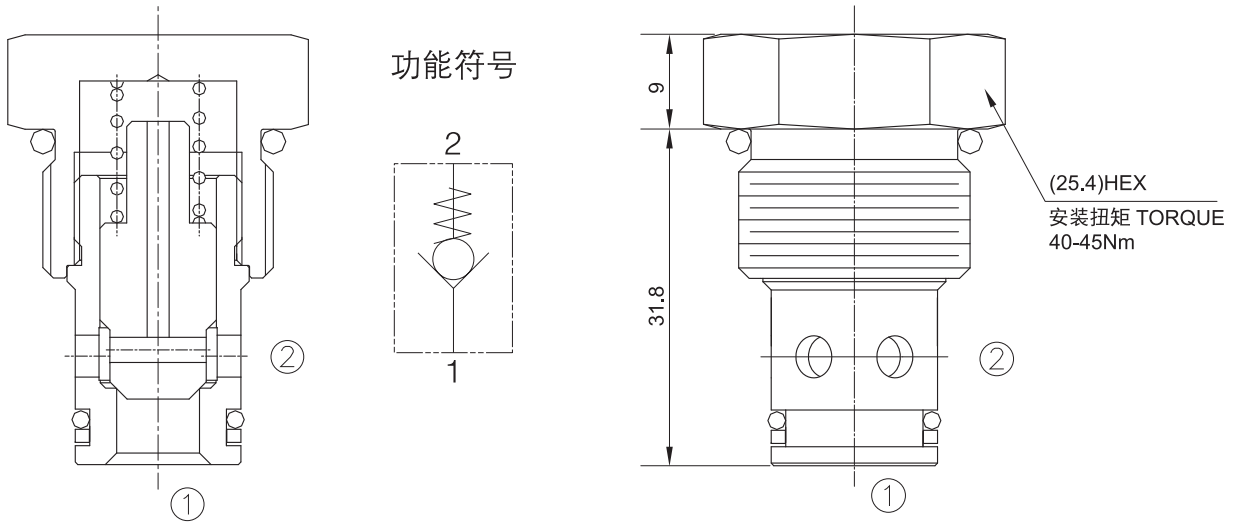
## 技术参数 SPECIFICATIONS

工作压力(Operating Pressure):	250bar
流量(Flow):	See PRESSURE DROP VS.FLOW graph.
内泄漏(Internal Leakage):	2 drops/min(滴/分). max. at 250bar
开启压力(Crack Pressures):	034=0.34bar 10=1.0bar 21=2.1bar 28=2.8bar 48=4.8bar 69=6.9bar 136=13.6bar 204=20.4bar
温度(Temperature):	-40°F to +250°F(-40°C to +120°C)
过滤(Filtration):	25µm or better
油液(Fluids):	Mineral-based fluids with viscosities of 7.4 to 420 cSt.(矿物油粘度)
插孔(Cavity):	C-10-2, See page 93

## 压力 - 流量曲线 PRESSURE DROP VS.FLOW



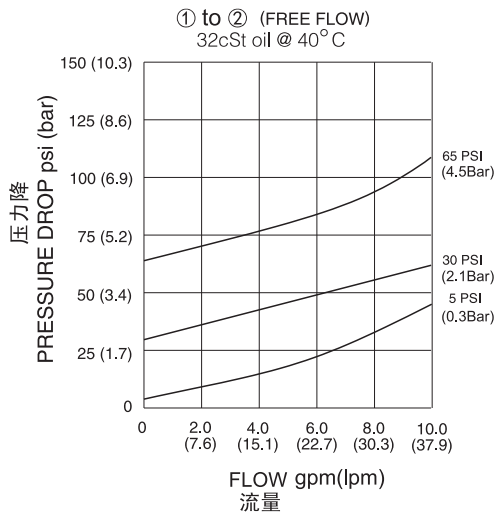
# CV-10-P 外形与技术参数



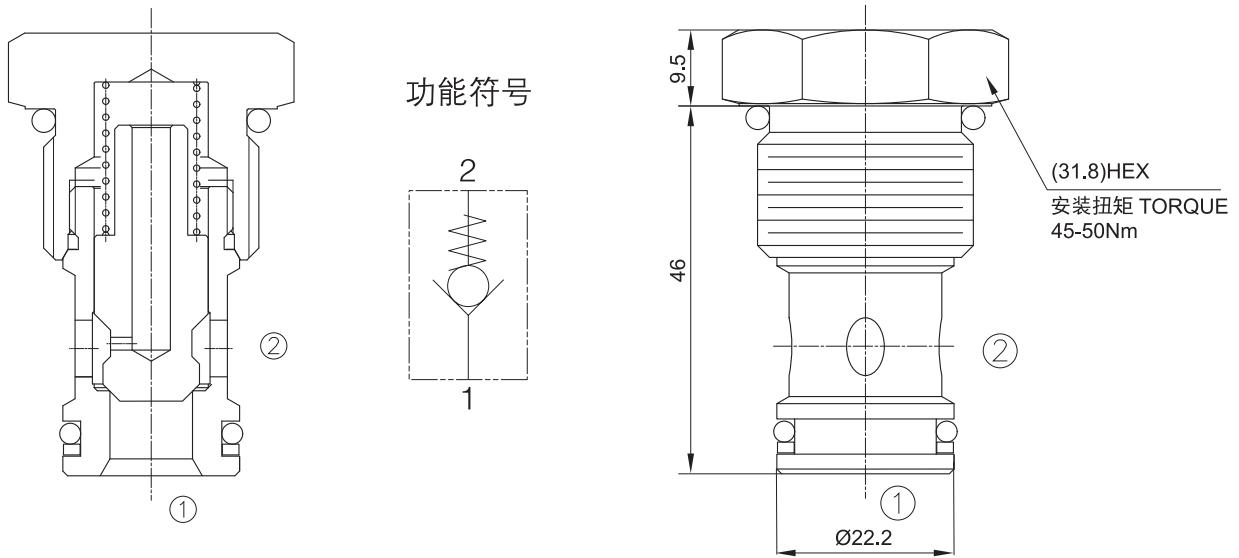
## 技术参数 SPECIFICATIONS

工作压力(Operating Pressure):	350bar
流量(Flow):	See PRESSURE DROP VS.FLOW graph.
内泄漏(Internal Leakage):	2 drops/min(滴/分). max. at 350bar
开启压力(Crack Pressures):	03=0.3bar 07=0.7bar 21=2.1bar 45=4.5bar 69=6.9bar
温度(Temperature):	-40°F to +250°F(-40°C to +120°C)
过滤(Filtration):	25µm or better
油液(Fluids):	Mineral-based fluids with viscosities of 7.4 to 420 cSt.(矿物油粘度)
插孔(Cavity):	C-10-2, See page 93

## 压力 - 流量曲线 PRESSURE DROP VS.FLOW



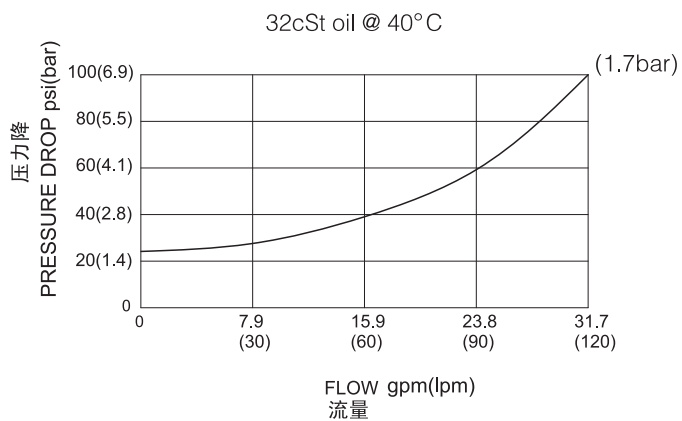
## CV-12-P 外形与技术参数



### 技术参数 SPECIFICATIONS

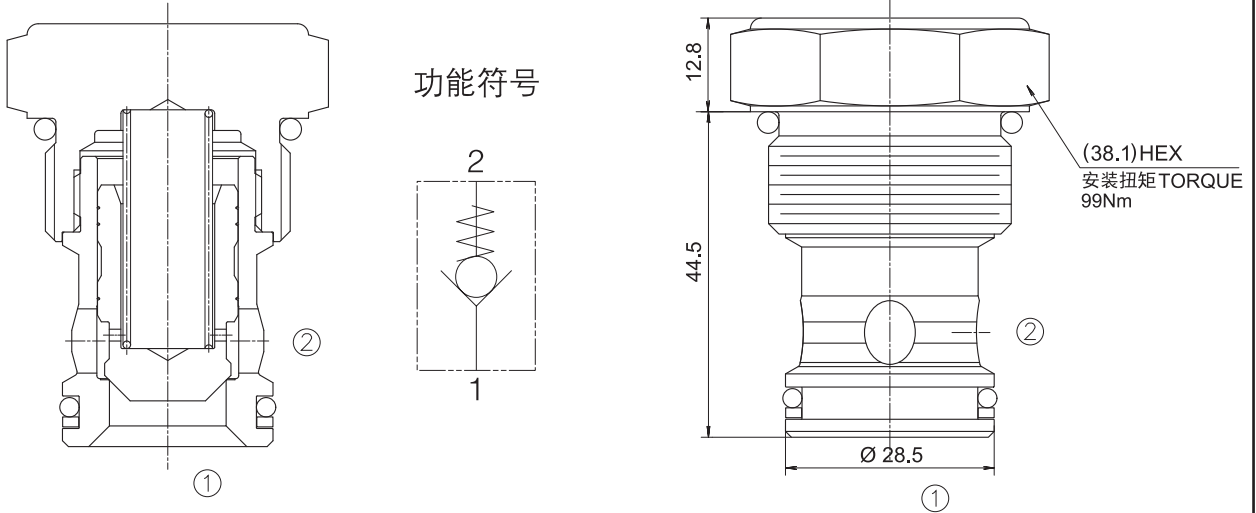
工作压力(Operating Pressure):	250bar
流量(Flow):	See PRESSURE DROP VS.FLOW graph.
内泄漏(Internal Leakage):	5 drops/min(滴/分). max. at 250bar
开启压力(Crack Pressures):	17=1.7bar 45=4.5bar
温度(Temperature):	-40°F to +250°F(-40°C to +120°C)
过滤(Filtration):	25µm or better
油液(Fluids):	Mineral-based fluids with viscosities of 7.4 to 420 cSt.(矿物油粘度)
插孔(Cavity):	C-12-2, See page 93

### 压力 - 流量曲线 PRESSURE DROP VS.FLOW





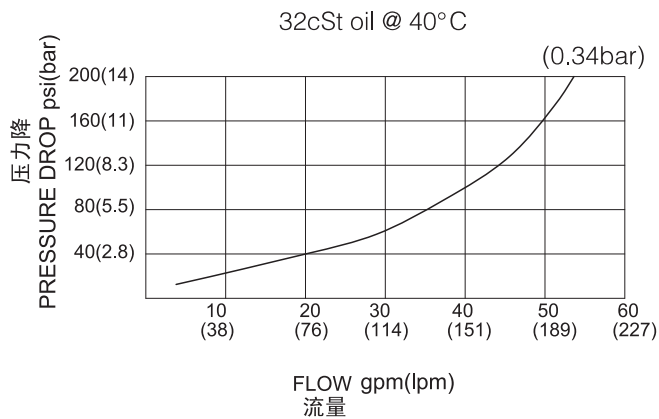
# CV-16-P 外形与技术参数



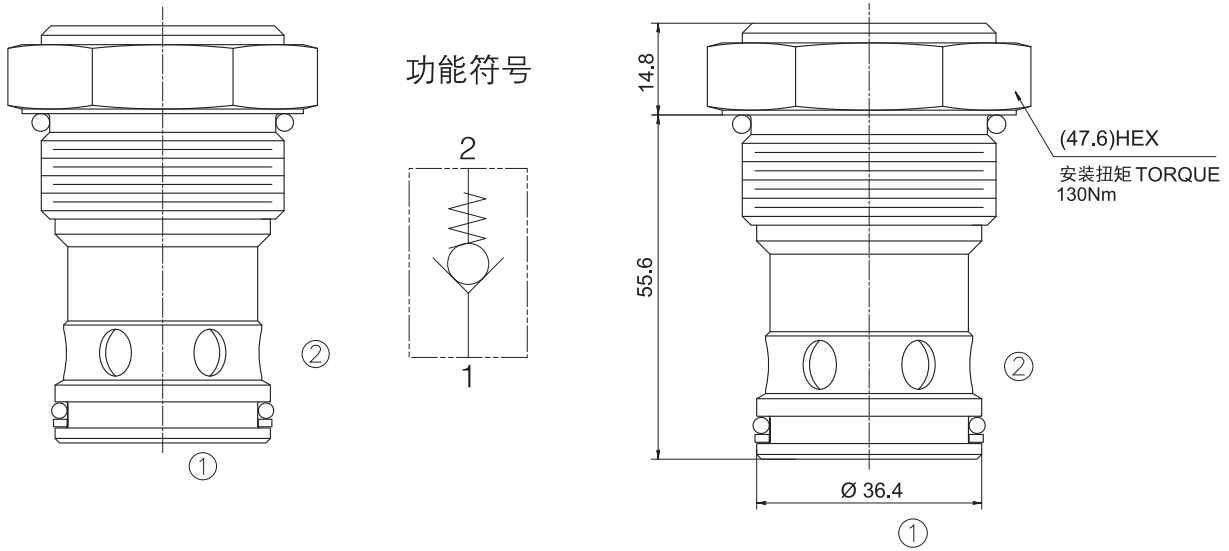
## 技术参数 SPECIFICATIONS

工作压力(Operating Pressure):	350bar
流量(Flow):	See PRESSURE DROP VS.FLOW graph.
内泄漏(Internal Leakage):	5 drops/min(滴/分). max. at 350bar
开启压力(Crack Pressures):	034=0.34bar 17=1.7bar 45=4.5bar 69=6.9bar
温度(Temperature):	-40°F to +250°F(-40°C to +120°C)
过滤(Filtration):	25µm or better
油液(Fluids):	Mineral-based fluids with viscosities of 7.4 to 420 cSt.(矿物油粘度)
插孔(Cavity):	C-16-2, See page 93

## 压力 - 流量曲线 PRESSURE DROP VS.FLOW



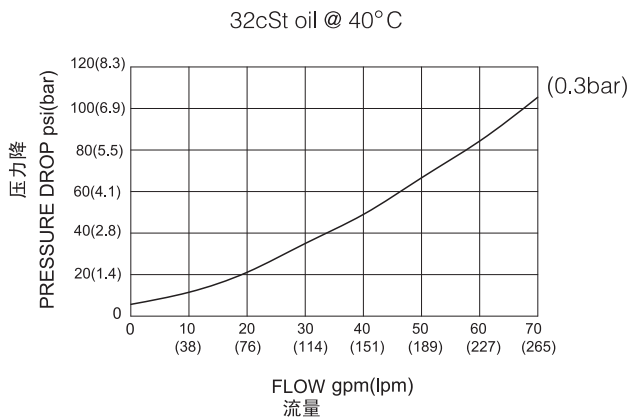
## CV-20-P 外形与技术参数



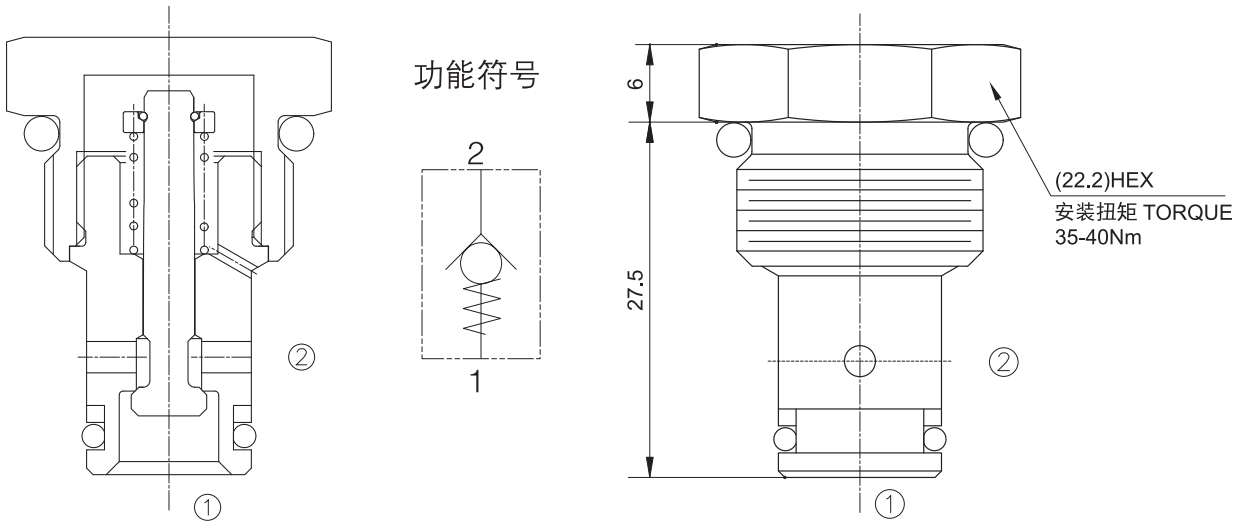
### 技术参数 SPECIFICATIONS

工作压力(Operating Pressure):	350bar
流量(Flow):	See PRESSURE DROP VS.FLOW graph.
内泄漏(Internal Leakage):	5 drops/min(滴/分). max. at 350bar
开启压力(Crack Pressures):	03=0.3bar 14=1.4bar 45=4.5bar
温度(Temperature):	-40°F to +250°F(-40°C to +120°C)
过滤(Filtration):	25µm or better
油液(Fluids):	Mineral-based fluids with viscosities of 7.4 to 420 cSt.(矿物油粘度)
插孔(Cavity):	C-20-2, See page 93

### 压力 - 流量曲线 PRESSURE DROP VS.FLOW



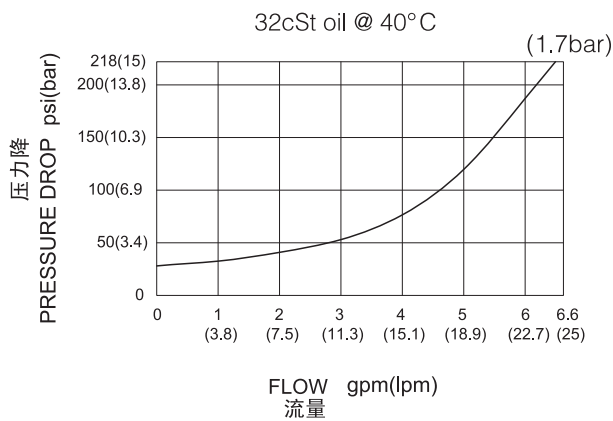
# CVR-08-P 外形与技术参数



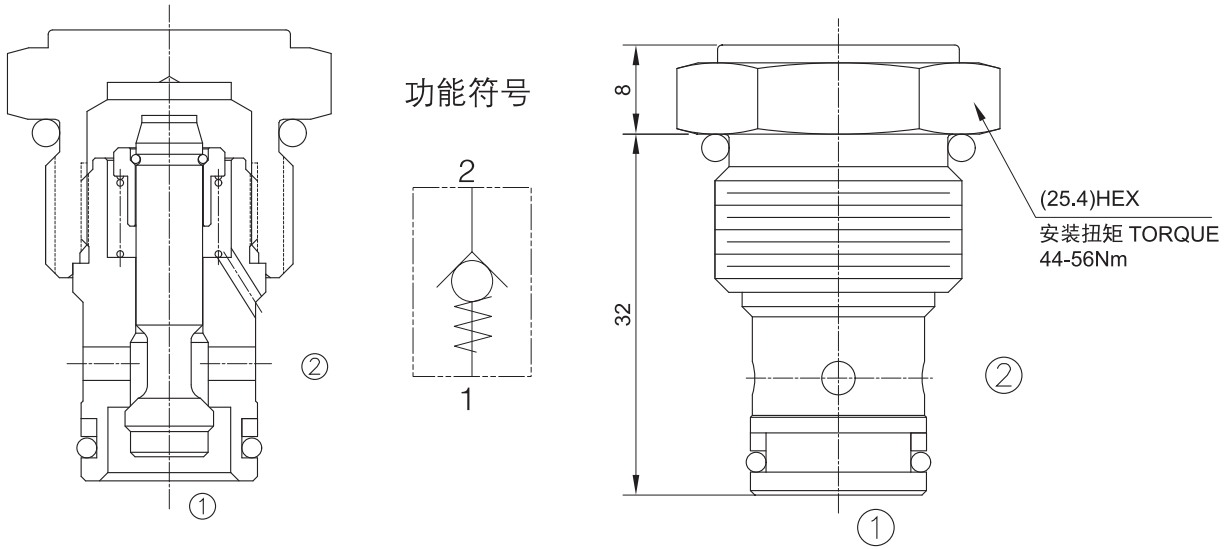
## 技术参数 SPECIFICATIONS

工作压力(Operating Pressure):	350bar
流量(Flow):	See PRESSURE DROP VS.FLOW graph.
内泄漏(Internal Leakage):	2 drops/min(滴/分), max. at 350bar
开启压力(Crack Pressures):	07=0.7bar 14=1.4bar 41=4.1bar 55=5.5bar 76=7.6bar
温度(Temperature):	-40°F to +250°F(-40°C to +120°C)
过滤(Filtration):	25µm or better
油液(Fluids):	Mineral-based fluids with viscosities of 7.4 to 420 cSt.(矿物油粘度)
插孔(Cavity):	C-8-2, See page 93

## 压力 - 流量曲线 PRESSURE DROP VS.FLOW



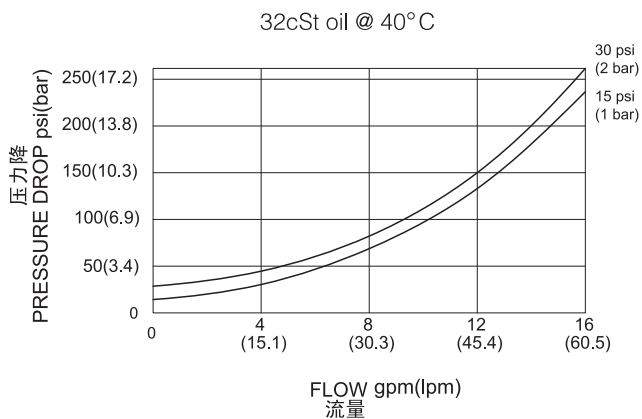
# CVR-10-P 外形与技术参数



## 技术参数 SPECIFICATIONS

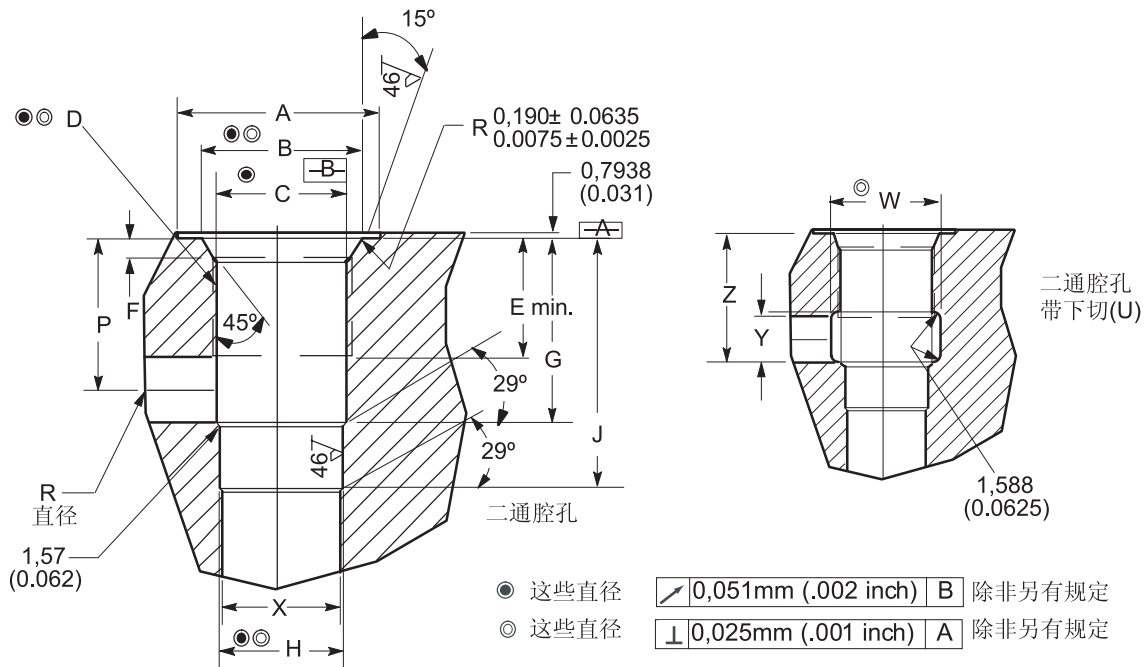
工作压力(Operating Pressure):	350bar
流量(Flow):	See PRESSURE DROP VS.FLOW graph.
内泄漏(Internal Leakage):	2 drops/min(滴/分). max. at 350bar
开启压力(Crack Pressures):	03=0.3bar 10=1bar 20=2bar 30=3bar
温度(Temperature):	-40°F to +250°F(-40°C to +120°C)
过滤(Filtration):	25 μm or better
油液(Fluids):	Mineral-based fluids with viscosities of 7.4 to 420 cSt.(矿物油粘度)
插孔(Cavity):	C-10-2, See page 93

## 压力 - 流量曲线 PRESSURE DROP VS.FLOW



# C-\*\*-2 插孔尺寸

单位 mm ( inch )



腔孔	A	B	C	D	E	F	G	H	J	P	R	X
mm (inch) 镗孔		+0,0510 (+0.0020)	+0,0510 (+0.0020)		螺纹	全 螺纹		$\pm 0,0254$ ( $\pm 0.001$ )			最大 直径	最大 直径
C-4-2	21,03 (0.828)	12,37 (0.487)	9,80 (0.386)	.4375"—20	9,53 (0.375)	2,36-2,74 (0.093-0.108)	15,49 (0.610)	8,74 (0.344)	23,37 (0.920)	9,93 (0.391)	6,35 (0.250)	6,35 (0.25)
C-8-2	30,16 (1.188)	20,65 (0.813)	17,47 (0.688)	.750"—16	12,70 (0.500)	2,54-2,92 (0.100-0.115)	19,05 (0.750)	12,72 (0.501)	30,17 (1.188)	14,68 (0.578)	8,74 (0.344)	11,11 (0.438)
C-10-2	30,16 (1.188)	24,00 (0.945)	20,62 (0.812)	.875"—14	15,88 (0.625)	2,54-2,92 (0.100-0.115)	23,81 (0.937)	15,90 (0.626)	33,32 (1.312)	18,23 (0.718)	11,11 (0.437)	14,29 (0.562)
C-12-2(U)	38,10 (1.500)	29,15 (1.148)	24,76 (0.975)	1.062"—12	22,22 (0.875)	3,30/3,68 (0.130-0.145)	34,92 (1.375)	23,82 (0.938)	46,35 (1.825)	27,94 (1.100)	12,70 (0.500)	22,22 (0.875)
C-16-2	44,45 (1.750)	35,58 (1.401)	31,34 (1.234)	1.312"—12	22,22 (0.875)	3,30/3,68 (0.130-0.145)	34,14 (1.344)	28,62 (1.127)	46,84 (1.844)	24,60 (0.968)	19,05 (0.750)	19,05 (0.750)
C-20-2	57,66 (2.270)	43,59 (1.716)	39,12 (1.540)	1.625"—12	20,64 (0.812)	3,35/3,73 (0.132-0.147)	44,45 (1.750)	36,55 (1.439)	58,72 (2.312)	30,96 (1.218)	25,40 (1.000)	30,16 (1.188)

腔孔	W	Y	Z
mm (inch)			
C-12-2U (仅)	30,82 (1.214)	12,70 (0.500)	34,29 (1.350)