

## 订货型号

WMAP-160 - / PE

定差压力继电器

压力范围:

3~40bar

4~80bar

8~160bar

16~320bar

=40

=80

=160

=320

无标记=

/PE=

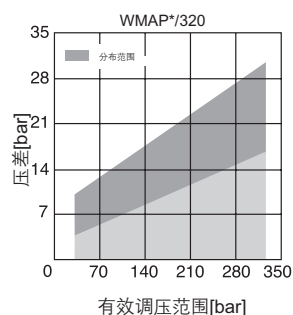
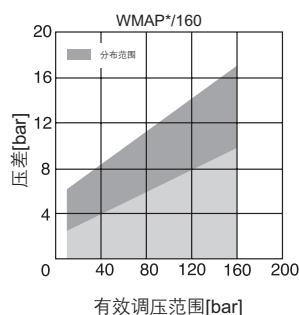
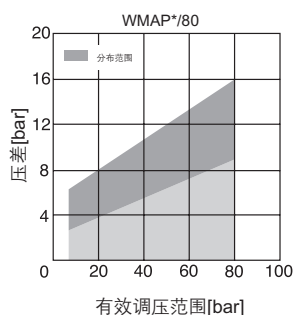
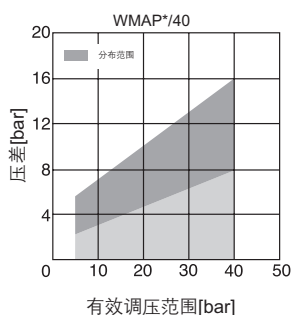
丁晴橡胶密封

氟橡胶密封

10=

设计序列号

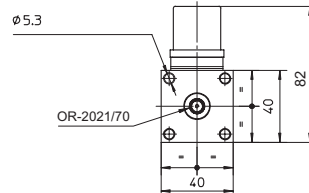
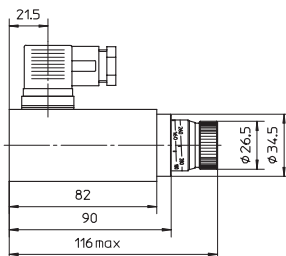
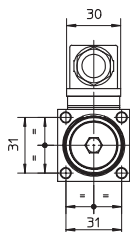
## 特性曲线



曲线图显示根据有效调压范围,在切换点(压力升高时)与开关复位点(压力降低时)之间的压差随切换点的设定压力而变化。

## 外形连接尺寸

WMAP-\*\*\*



安装螺钉:

4个M5 90的内六角螺钉

## 订货型号: 叠加式压力继电器

WHPD-011 / - / PE

叠加式压力继电器

WHPD

WKPD

=06

=10

无标记=

/PE=

丁晴橡胶密封

氟橡胶密封

10=

设计序列号

型号说明:

P口

A口和B口

A口

B口

=011

=012

=013

=014

40=

80=

160=

320=

压力范围:

3~40bar

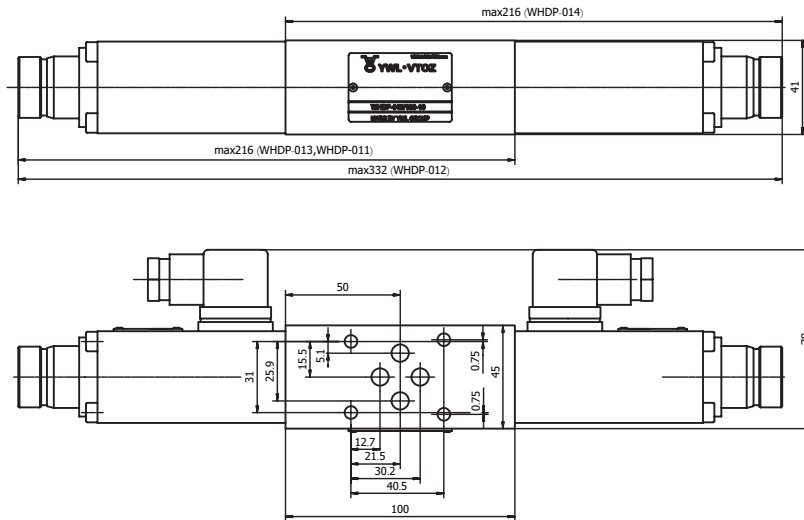
4~80bar

8~160bar

16~320bar

## 外形连接尺寸

WHDP-011  
WHDP-012  
WHDP-013  
WHDP-014

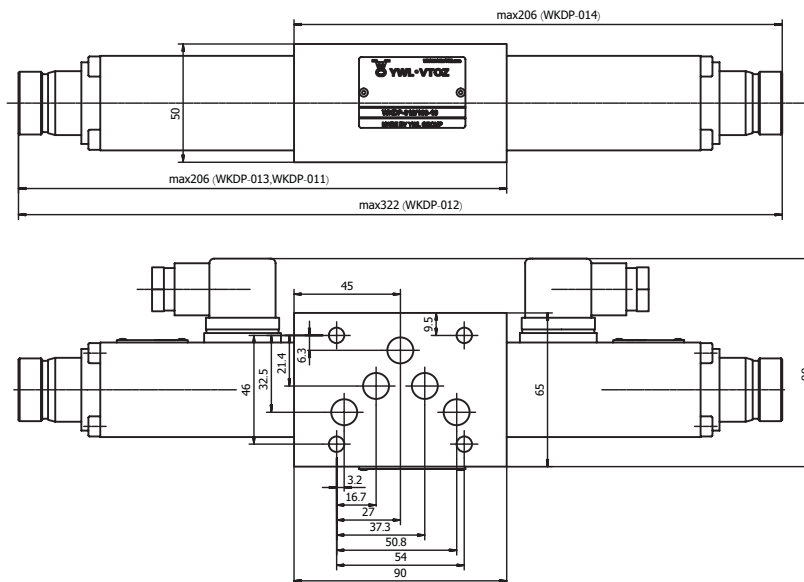


安装面

ISO 4401-AB-03-4 标准, 通径: 06  
油口尺寸: A, B, P, T:  $\Phi = 7,5$  mm (max)  
密封圈: 4个 OR 108

安装螺钉: 需单独订货  
4个M5的螺栓, 强度等级10.9

WKDP-011  
WKDP-012  
WKDP-013  
WKDP-014



安装面

ISO 4401-AC-05-4 标准, 通径: 10  
油口尺寸: A, B, P, T:  $\Phi = 11.2$  mm (max)  
密封圈: 5个 OR 2050

安装螺钉: 需单独订货  
4个M5的螺栓, 强度等级10.9