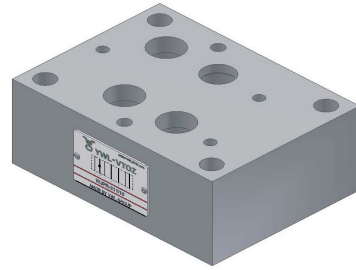




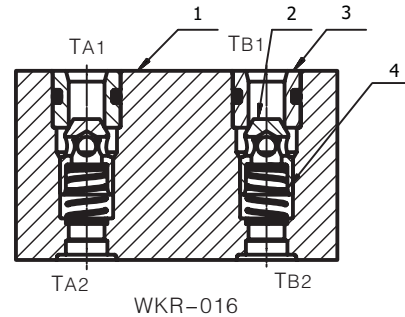
- 叠加阀
- 用于垂直叠加安装
- 8种不同的隔离功能
- 可选择不同的开启压力



型号: WJPR-211/10

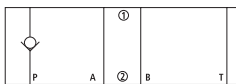
说明

WHR, WKR, WJPR型单向阀是叠加式结构的单向阀。
 此类阀主要由阀体(1)和单向阀插装件组成。
 单向阀在一个方向上无泄漏地封闭,而在另一个方向则允许自由流通。
 内装弹簧(4)使锥阀(2)闭合并使其保持在闭合位置。
 此类阀适用于具有相似润滑性能的矿物油或合成油压系统中。

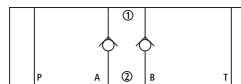


图形符号

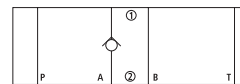
WHR-011
WKR-011
WJPR-211



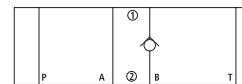
WHR-002
WKR-002
WJPR-202



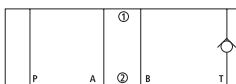
WHR-003
WKR-003
WJPR-203



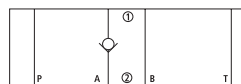
WHR-004
WKR-004
WJPR-204



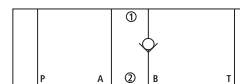
WHR-016
WJPR-216



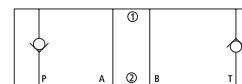
WHR-007
WKR-007
WJPR-207



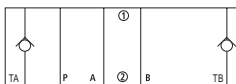
WHR-008
WKR-008
WJPR-208



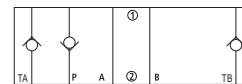
WHR-009
WJPR-209



WKR-016



WKR-009



订货型号

叠加式单向阀 WHR-0 WKR-0 WJPR-2		=06通径 =10通径 =16通径	11 / 4	/	无标记= PE=	丁晴橡胶密封 氟橡胶密封	
直动式: 11= 16= 02= 03= 04= 07= 08= 09=		P口无泄漏密封(P1→P2) T口无泄漏密封(T2→T1) A口和B口无泄漏密封(A2→A1)(B2→B1) A口无泄漏密封(A2→A1) B口无泄漏密封(B2→B1) A口无泄漏密封(A1→A2) B口无泄漏密封(B1→B2) P口和T口无泄漏密封(P1→P2)(T2→T1)		10= 设计号		弹簧的开启压力: 对于WHR和WKR: -= /2= /4= /8=	对于WJPR: -= 0.5bar(标准) 2bar 4bar 8bar

技术数据

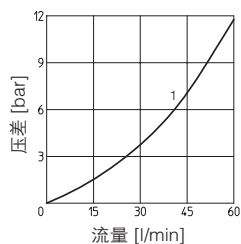
安装位置	任意位置
安装面精度	表面粗糙度Ra0.4,平面度0.01/100(ISO 1101)
环境温度	从-20°C到+70°C
油液种类	符合DIN51524~535的液压油、磷酸酯
推荐粘度	40°C时为15~100mm ² /s(ISO VG15~100)
油液清洁度	符合ISO19/16标准(建议用25 μm和β ₂₅ ≥75的过滤器)
油液温度	-20°C~+60°C(标准密封); -20°C~+80°C(PE密封)。

特性曲线: 基于油温50°C, ISO VG46标准液压油

WHR-0的曲线图:

油液在单向阀中流动方向:

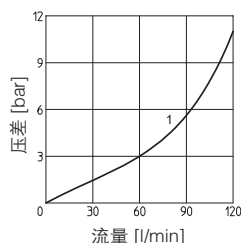
- 1 = WHR-011, WHR-016, WHR-002
 WHR-003, WHR-004, WHR-007
 WHR-008, WHR-009



WKR-0的曲线图:

油液在单向阀中流动方向:

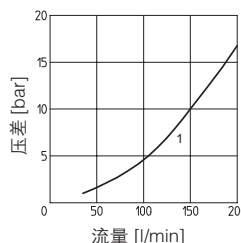
- 1 = WKR-011, WKR-016, WKR-002
 WKR-003, WKR-004, WKR-007
 WKR-008, WKR-009



WJPR-2的曲线图:

油液在单向阀中流动方向:

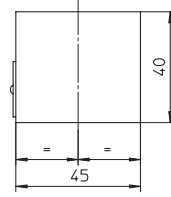
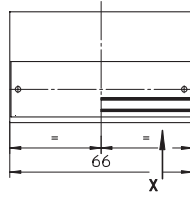
- 1 = WJPR-211, WJPR-216, WJPR-202
 WJPR-203, WJPR-204, WJPR-207
 WJPR-208, WJPR-209



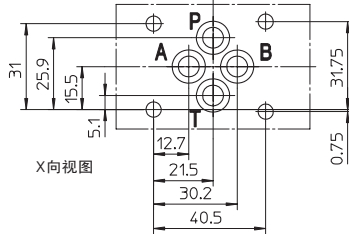
尺寸

WHR-0阀的安装尺寸

WHR-011, WHR-016,
WHR-002, WHR-003,
WHR-004, WHR-007
WHR-008, WHR-009



质量: 0.7kg

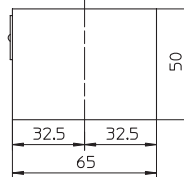
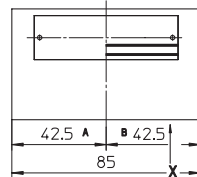


安装界面:
ISO 4401-AB-03-4标准,尺寸06
油口尺寸: A,B,P,T: $\Phi=7.5\text{mm}$ (最大)
密封圈: 4个"OR"108

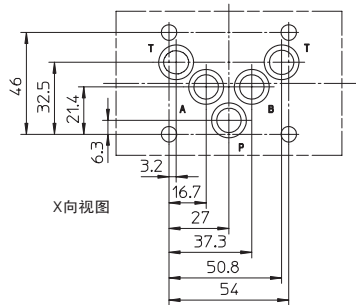
安装螺钉: 需单独订货
4个M5的螺栓, 强度等级10.9。

WKR-0阀的安装尺寸

WKR-011, WKR-016,
WKR-002, WKR-003,
WKR-004, WKR-007
WKR-008, WKR-009



质量: 1.7kg

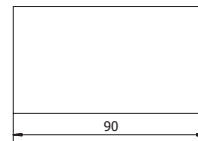
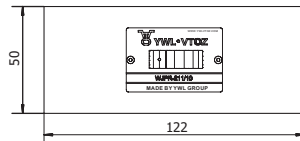


安装界面:
ISO 4401-AC-05-4标准,尺寸10
油口尺寸: A,B,P,T: $\Phi=11.2\text{mm}$ (最大)
密封圈: 5个"OR"2050

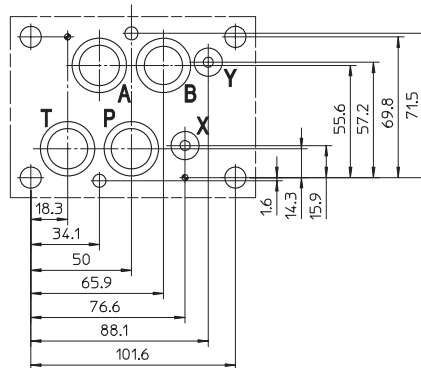
安装螺钉: 需单独订货
4个M6的螺栓, 强度等级10.9。

WJPR-2阀的安装尺寸

WJPR-211, WJPR-216,
WJPR-202, WJPR-203,
WJPR-204, WJPR-207
WJPR-208, WJPR-209



质量: 3.3kg



安装界面:
ISO 4401-AD-07-4标准,尺寸16
油口尺寸: A,B,P,T:F $\Phi=20\text{mm}$
油口尺寸: X,Y: $\Phi=7\text{mm}$
密封圈: 4个"OR"130, 2个"OR"109

安装螺钉: 需单独订货
4个M10的螺栓, 强度等级10.9,
2个M6的螺栓, 强度等级10.9。